

WAM Helvetia Big Bag Unloader

We are closing our insect pilot facility and therefore we are selling all the equipment in there.

This is the description and offer for our WAM Helvetia Big Bag Unloader SBB 125 S-frame.

In our insect processing system, the big bag discharger was planned for distributing feed into the automated feed distributor, once the automatic feeding system would have come into action. The system never went into usage, so the discharger is basically new. The discharger can be used for any other operation where FIBCs are in use, within the technical parameters established by the producer.

Key Features in Operation

- Stationary system for FIBC discharging
- Safe and handy loading, unloading and bulk bag opening operations
- Flow aid system allows total or partial discharge of the material
- Internal footprint (no protruding parts) allowing optimized battery configuration
- No labor required for complete FIBC emptying
- Easily adaptable to a wide range of materials, different FIBC sizes, types and weights
- Problem-free, complete emptying of bag corners even with compressed bulk materials
- Modular design, easily adaptable to different bulk solids, FIBC sizes and weights
- Electric motorvibrator as additional material discharge aid
- Innovative discharge system tailored for different material characteristics

Key Technical Features

- Key Technical Features
- Frame painted in normal steel, parts in contact with the product in normal steel
- Frame with extendable top
- Bag suspension with bag cross
- Discharge hopper: Oscillating hopper with vibration motor
- Vibration motor: 0.10 kW, 230/400 V, 50 Hz, Ingress Protection 65, KI.F IE3
- Seal under BigBag: white rubber
- Spout diameter: 219 mm (without flange)
- Internal finish: sandblasted 2.5 not primed food compliant
- External finish: Primed + RAL 7035
- Accessories: with rubber sleeve D=219 mm L=300 mm on the spoutSensors

History of the System

- System was bought new
- Hasn't come into use due to the closure of the factory



WAM Helvetia Big Bag Unloader



FIBC Dischargers

Big-Bag - Entleerstationen

Déchargeuses de Big-Bag

Svuota Big-Bag

SBB



WAM Helvetia Big Bag Unloader

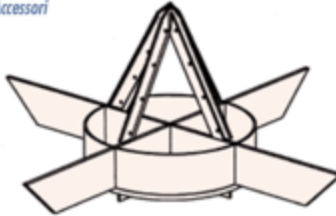
Type	A	B	C	E	F
SBB. 125. C	1.914	1.400	832	100	1.734
SBB. 150. C	2.490	1.800	1.047	160	1.880

Dimensions in mm

Type	A max.	B	C	D	E	F
SBB. 125. S	3.960	1.400	832	130	100	1.734
SBB. 150. S	4.307	1.800	1.047	180	160	1.880

Dimensions in mm

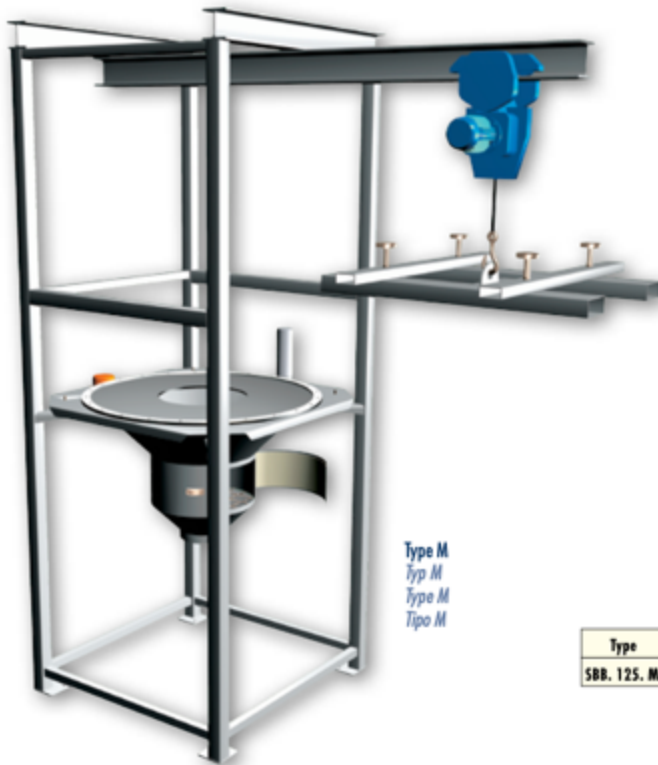
Accessories
Zubehör
Accessoires
Accessori



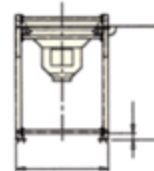
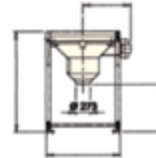
Cutting System
Schnittvorrichtung
Système de coupe
Sistema di taglio



Pneumatic Shaking System
Pneumatische Schüttelvorrichtung
Système pneumatique de sacouement
Sistema di scuotimento pneumatico



Type M
Typ M
Type M
Tipo M



Type	A	B	C	E	F	G	H	L
SBB. 125. M	4.810	1.400	832	160	1.734	2.150	750	3.765

Dimensions in mm



With Rotary Valve
Mit Zahnradklappe
Avec sas à vis hélicoïdale
Con rotavalvola



With Pneumatic Conveying System
Mit pneumatischem Fördersystem
Avec transport pneumatique
Con trasporto



With Micro-Batch Feeder
Mit Mikrodosierer
Avec microdosateur
Con microdosatore



With Tubular Screw Feeder
Mit Dosierschnecke
Avec vis tubulaire



With Flexible Helix Conveyor
Mit flexibler Schnecke
Avec vis flexible

When discharging on FIBC the following problems can be encountered:

- Dust is produced when the bag is opened;
- Difficulties occur when trying to remove substances from the bag which have been compressed during transportation or storage;
- Substances remain trapped in the corners of the bag, making it necessary for the subsequent discharging to be carried out by hand.

In order to avoid such problems we suggest you use our modular FIBC Discharging System.

Our systems can be extended and a range of accessories is available to satisfy every individual requirement with unrivalled efficiency, simplicity and cost.

Standard material: carbon steel.

On request: 304 or 316 stainless steel.

Beim Entleeren von Big-Bags treten oft Probleme auf wie:

- Staubentwicklung beim Öffnen des Big-Bags;
- Big-Bag lässt sich nicht vollständig entleeren, weil sich der Inhalt durch Transport oder längere Lagerung stark verdichtet hat;
- In den Ecken des Big-Bags befinden sich Produktreste, die von Hand entfernt werden müssen.

Bei Big-Bag-Entleerstationen vom Typ S88 wurden diese Probleme dank eines Konzepts, welches stark auf individuelle Kundenbedürfnisse ausgerichtet ist, bereits im Vorfeld vermieden.

Die Modulbauweise und eine breite Auswahl an Zubehör bieten effiziente und wirtschaftliche, vor allem aber anwenderfreundliche Lösungen.

Standardausführung aus Stahl.

Auf Wunsch Ausführungen aus Edelstahl 1.4301 oder 1.4401.

Au moment de la vidange des Big-Bags, il se posent généralement les problèmes suivants:

- Dégagement des poussières à l'ouverture du sac;
- Extraction difficile des produits due au tassement généré par le transport ou le stockage;
- Opération manuelle supplémentaire pour vider complètement les sacs du produit restant dans les angles.

Pour éliminer ces inconvénients, nous vous proposons un système de déchargement modulaire et expansible, accompagné de toute une gamme d'accessoires qui permettent de satisfaire aux demandes spécifiques.

Ce système est efficace, simple et économique.

Fabrication de série: en acier ou carbone.

Sur demande: en inox AISI 304-316.

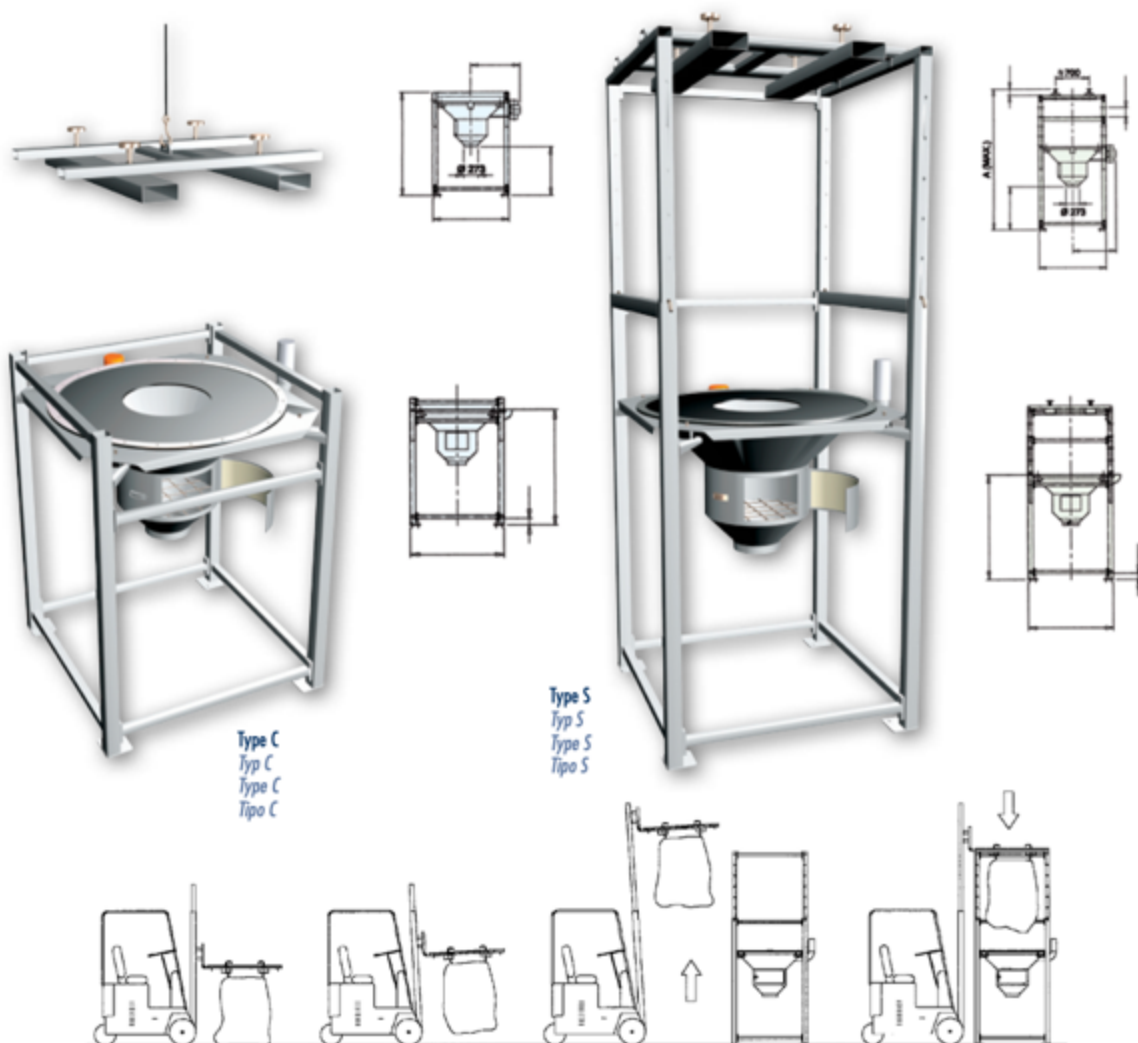
Alcuni dei problemi che si manifestano durante le fasi di svuotamento dei Big-Bag sono:

- Emissione di polvere durante l'apertura della bocca;
- Estrazione difficile del prodotto dovuto alla sua compattazione in seguito allo stoccaggio e a trasporto del Big-Bag;
- Svuotamento parziale dei sacconi che contengono prodotti compattati.

Al fine di evitare gli inconvenienti sopra esposti proponiamo un sistema di svuotamento modulare ed espandibile completo di una gamma di accessori che consente di soddisfare richieste specifiche con ineguagliabile efficienza, semplicità ed economicità.

Esecuzione standard: acciaio al carbonio

A richiesta: AISI 304-316



Type C
Typ C
Type C
Tipo C

Type S
Typ S
Type S
Tipo S

Legal Disclaimer

Please note that we do not give any guarantees to the state and conditions of the Big Bag Unloader. We reject any liability claims for damage during teardown, transport, assembly or operation at your site. We are selling the equipment as is and we do not give any guarantees with it.

Bidding Process

We will receive Bids for the entire insect processing system in a first round until May 31st. We will inform bidders on their offer following the closing of the first rounds and will offer them the option to improve their bids until June 14th, 2024. Please use the bidding form in the separate document for bidding.